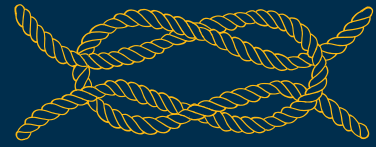


# Marine Facilities Fact Sheet



## Port Nikau

WHANGAREI 35.7°S - 174.3°E



### Booking a berth

Contact the Marina Manager on **027 4238 064**. You will be provided with all the information you require plus Pricing and Terms and Conditions. You will need to provide an Insurance Certificate.

**[www.portnikau.co.nz](http://www.portnikau.co.nz)**

# Location

Port Nikau is located in the Whangarei Harbour (2hr drive from Auckland), 12 nautical miles from the harbour entrance, opposite Onerahi Airport. The CBD, State Highway, hospital, marine and engineering supplies and services are all within a few kilometres.

The marine facilities are a legacy from the days when Port Nikau was the location of Northland's trading port. The established marine infrastructure is now available for use by commercial and recreational vessels.

## Facilities and options:

- Deep water wharves (9m depth)
- Floating pontoons (yachts/cruisers)
- Diesel stop
- In-water conversion and refit
- Mast removal
- Heavy duty hard stand
- In-water painting
- 3-phase power and water
- Covered BBQ area
- Shower and toilet facilities
- Laundry facilities
- Wifi



## PORT NIKAU WHARVES

The wharves at Port Nikau consist of the Eastpoint Wharves, with Eastpoint Marina and fuel stop, and the Arataki Wharf.



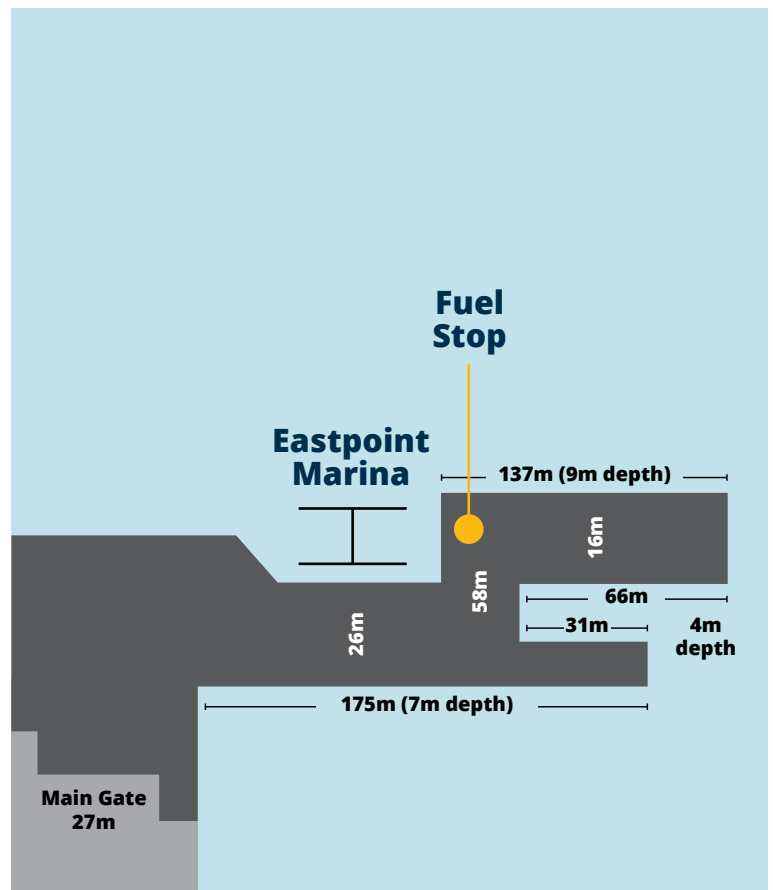
## Eastpoint Wharves

Originally used to load export butter, the wharves have multiple berthing faces, ranging from 31m to 175m.

The wharves were built to sustain large industrial ships and have hardwood fender piles. Depth at the channel berth is 9m and depth at the inside berth is 7m. A large concreted wharf space is available for ship repair or a workspace.

### Facilities and options

- In-water conversion and refit
- Mast removal
- Heavy duty hard stand
- In-water painting
- Fuel stop
- 3-phase power and water
- Covered BBQ area
- Shower and toilet facilities
- Laundry facilities
- Wifi

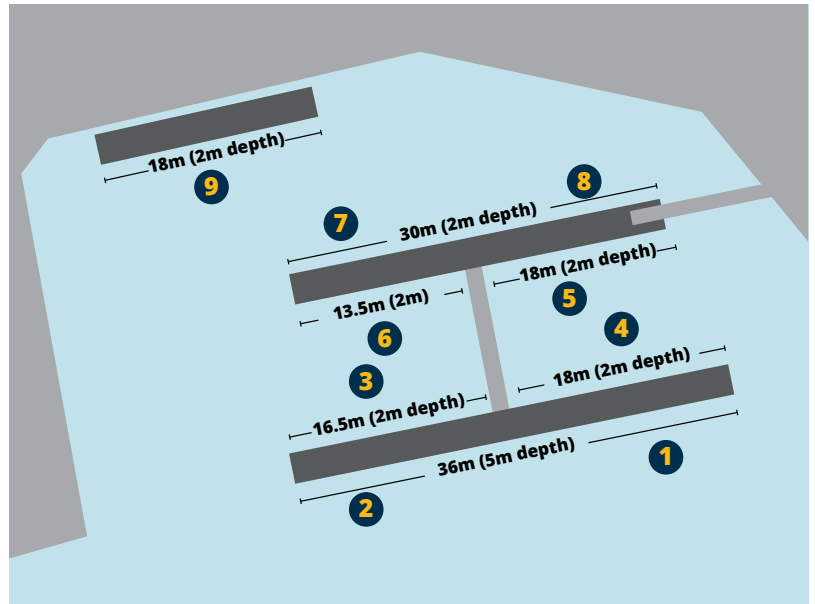


## Eastpoint Marina

Eastpoint Marina has 8 floating pontoons. This facility is suited to cruising vessels with easy on/off loading and access. A leading option for vessels requiring on-water upgrades repair, and servicing. Depth on the channel berth is 5m with shallower on the inside (2.0m).

## Fuel Stop

Located on the corner of Mains 1, the diesel stop has 24 hour access for vessels and can be accessed using a credit card or authorised fuelcard.



## Arataki Wharf

Also known as the Chip / Fertilizer Wharf or Mains 3, Arataki Wharf was originally used to load out fertilizer boats and later woodchip exports.

The brick building on piles over the water on the edge of the Mains 3 wharf is now known as the Tide Gauge Building; it once housed the harbour tide gauge machine. It was built for the Watersiders as an amenity base when working around the clock to load ships. The wharf is shallow on the inside (2.0m) and deeper on the channel berth (7.0m).

